



The Green, Epping, CM16

BUTLER & STAG



**A very attractive end of terrace victorian family home situated within one of Theydon bois most sought after locations and occupies a prime position overlooking the village green and duck pond**



## Freehold

- End Of Terrace Victorian Family Home
- Stunning Views Over The Village Green
- Basement/Storage
- Four Bedrooms/Four Bathrooms
- Walking Distance to Station & Amenities
- Close to 3000 Sq Ft Over Four Floors

Set on The Green, this property offers ample space totalling close to 3000 sq ft and incorporating versatile accommodation over four floors. Comprising a wide welcoming entrance hall synonymous with Victorian homes, lounge with wood flooring and a working place, a stunning kitchen/dining room with all modern appliances with bi-folding doors that open onto the rear garden, a downstairs cloakroom completes the ground floor.

The second floor has three spacious bedrooms, all with en-suites with two of the bedrooms having dual aspect with lovely views over the green. The third floor you will find the master bedroom with en-suite with built in wardrobes.

The lower ground floor is currently used as large storage and workshop space, however, offers opportunity to elevate into a cinema room with the added bonus of a lift that leads straight to the garden.

Externally, a side access gate opens to the well-maintained rear garden, extending beyond 30' with patio and manicured lawn.

Theydon Bois is arranged around its village green, which encompasses a duck pond and hosts various events during the year. There are also local shops that cater for daily needs and a selection of restaurants for dining out. There is a primary school within the village, together with a Montessori nursery. Theydon Bois also has a sporting atmosphere with its golf, tennis, and cricket clubs, whilst the Tube Station makes central London very accessible.

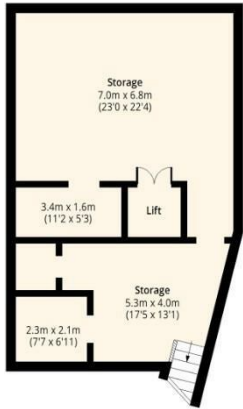




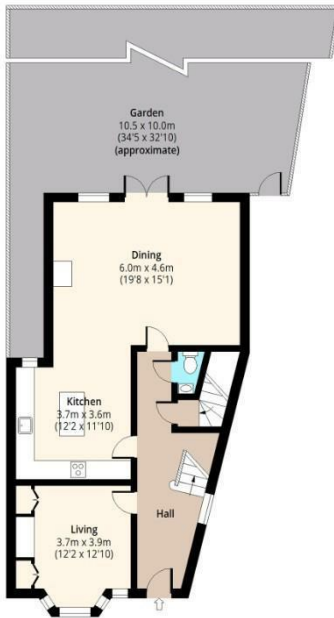
## The Green, CM16



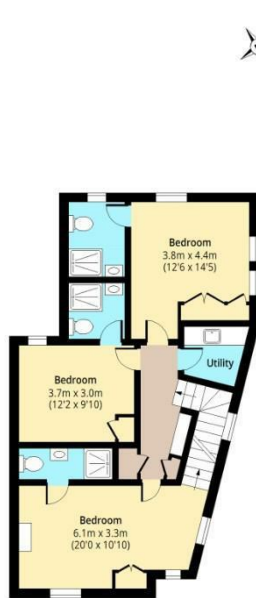
**Lower Ground Floor**  
Approx. 77.01 Sq. meters (829 Sq. feet)



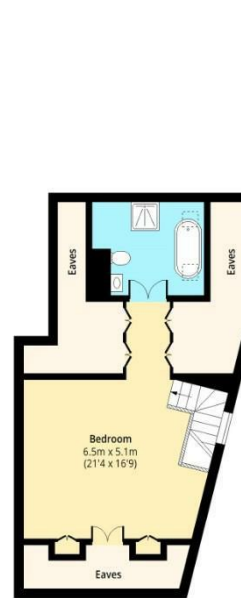
**Ground Floor**  
Approx. 76.64 Sq. meters (825 Sq. feet)



**First Floor**  
Approx. 74.78 Sq. meters (805 Sq. feet)



**Second Floor**  
Approx. 45.80 Sq. meters (493 Sq. feet)



Total area: approx. 274.24 Sq. meters (2952 Sq. feet)  
For illustration purposes only - not to scale  
www.ipaplus.com

IMPORTANT NOTICE - These particulars have been prepared in good faith and they are not intended to constitute part of an offer or contract. We have not performed a structural survey on this property and the services, appliances and specific fittings have not been tested. All photographs, measurements, floor plans and distances referred to are given as a guide and should not be relied upon.

# BUTLER & STAG

☎ 01992 667666

🏠 4 Forest Drive, Theydon Bois, Essex, CM16 7EY

✉ theydon@butlerandstag.com

www.butlerandstag.uk